

# Explosion Proof PTZ Camera

## DC-S3283EX

- Ex db IIC T6 Gb , Ex tD A21 T80°C
- AF Optical zoom lens (f=4.3 ~ 129mm)
- Easy installation with DirectIP NVR
- Intelligent Codec
- micro SD/SDHC/SDXC, Smart FailoverLifetime
- WDR, DIS
- PoE, Onvif
- IP67

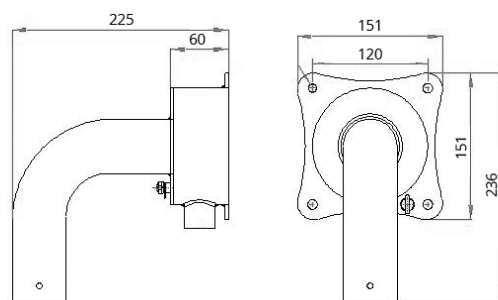
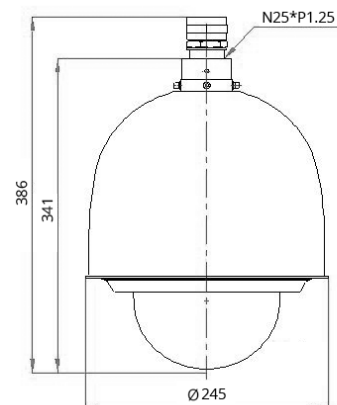


### SPECIFICATIONS

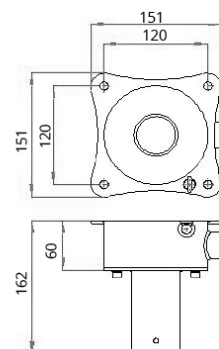
General	
Explosion Proof rate	Ex db IIC T6 Gb Ex tD A21 T80°C
Operating Temperature	-40°C ~ + 60°C
Power Source	PoE (48V dc)
Power Consumption	≤15.3W (Heater, Fan)
Materials	Stainless Steel 316L
Dimensions	Ø245 x 386mm
Weight	12.7Kg
Outdoor Ready	IP67
Pan/Tilt	
Rotation Speed	PAN: 0.02~180°/sec (preset 420°/sec) TILT: 0.02~180°/sec (preset 420°/sec)
Preset	256ea
Camera	
Image Sensor	1/3" Progressive 2M CMOS
Resolution	1,920 (H) x 1,080 (V)
Electronic Shutter Speed	Auto/Manual(1/30~1/10,000sec) Slow Shutter(1~1/5,1/7.5,1/15) Anti-Flicker
Angular Field of View	Wide: 64.7°(H),38.6°(V),72.7°(D) Tele : 2.3°(H), 1.4°(V), 2.6°(D)
Min. Illumination	COLOR : 0.1 Lux @ F1.6 B/W : 0.01 Lux @ F1.6
Focal Length	Optical 30x (4.3 ~ 129mm)
Ethernet	RJ-45 (10/100/1000Base-T)
Network	
Video Compression	H.265 / H.264 / M-JPEG
IP Camera Protocol	DirectIP 2.0, ONVIF Profile S
Network Protocols	DirectIP 2.0 Protocol, RTP/RTSP/TCP, RTP/RTSP/HTTP/TCP,RTP/UDP RTSP/TCP, HTTP, HTTPS, FTP, SNTp, SMTP, FEN, mDNS, Upnp

### DIMENSIONS

(Unit - mm)



Wall Mount



Ceiling Mount